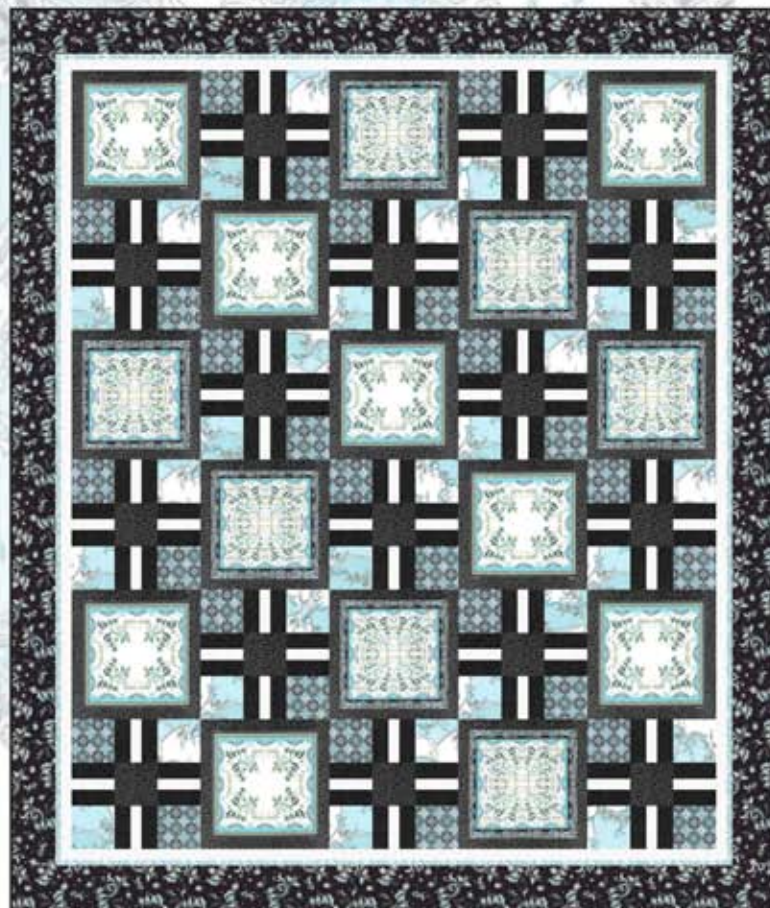


# ANTONELLA

Quilt design by Nancy Mahoney featuring fabrics from the "Antonella" collection  
by Hoffman California Fabrics

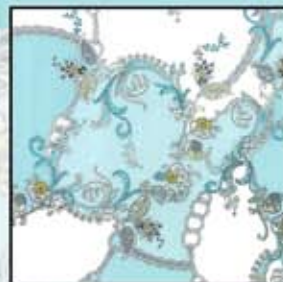


Free pattern available from [www.hoffmanfabrics.com](http://www.hoffmanfabrics.com)

Quilt Size 71 1/2" x 83 1/2"



L7264 194S-Robin's Egg/  
Silver



L7265 194S-Robin's Egg/  
Silver



L7266 128S-Midnight/  
Silver



L7267 194S-Robin's Egg/  
Silver



G8555 213S-Onyx/Silver

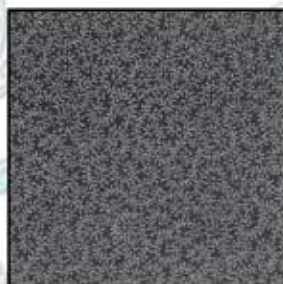


L7268 194S-Robin's Egg/  
Silver

Style	
L7264 194S-Robin's Egg/Silver	2 1/4 yards
J9216 4S-Black/Silver	1 1/4 yards
G8555 213S-Onyx/Silver*	1 1/2 yards
G8555 3S-White/Silver	3/4 yard
L7265 194S-Robin's Egg/Silver	5/8 yard
L7267 194S-Robin's Egg/Silver	5/8 yard
L7266 128S-Midnight/Silver	1 1/8 yards
L7268 194S-Robin's Egg/Silver	1/4 yard



G8555 3S-White/Silver



J9216 4S-Black/Silver

\*Yardage includes binding.

BACKING: Coordinate of your choice, 5 1/4 yards

**HOFFMAN FABRICS**

CALIFORNIA-INTERNATIONAL

# ANTONELLA

Quilt design by Nancy Mahoney featuring fabrics from the "Antonella" collection  
by Hoffman California Fabrics



Free pattern available from [www.hoffmanfabrics.com](http://www.hoffmanfabrics.com)

Quilt Size 71 1/2" x 83 1/2"



L7264 119G-Vintage/Gold



L7265 119G-Vintage/Gold



L7266 4G-Black/Gold



L7267 119G-Vintage/Gold



G8555 22G-Ivory/Gold



L7268 53G-Coffee/Gold



G8555 4G-Black/Gold



G8555 79G-Seafoam/Gold

Style	
L7264 119G-Vintage/Gold	2 1/4 yards
L7268 53G-Coffee/Gold	1 1/4 yards
G8555 4G-Black/Gold*	1 1/2 yards
G8555 22G-Ivory/Gold	3/4 yard
L7265 119G-Vintage/Gold	5/8 yard
L7267 119G-Vintage/Gold	5/8 yard
L7266 4G-Black/Gold	1 1/8 yards
G8555 79G-Seafoam/Gold	1/4 yard

\*Yardage includes binding.

BACKING: Coordinate of your choice. 5 1/4 yards

**HOFFMAN FABRICS**  
CALIFORNIA-INTERNATIONAL

# Antonella

Fabric collection by Hoffman Fabrics

Quilt design by Nancy Mahoney • Quilt size: 71½" x 83½" • Block size: 12" x 12"

## Yardage

	Black-Gold Quilt	Blue-Silver Quilt	Amount	Used for
Fabric A	L7264 119G Vintage gold	L7264 194G Robins egg silver	2 ¼ yards	Blocks
Fabric B	L7268 53G Coffee gold	J9216 4S Black silver	1 ¼ yards	Blocks
Fabric C	G8555 4G Black gold	G8555 213S Onyx silver	1 ½ yards	Blocks and binding
Fabric D	G8555 22G Ivory gold	G8555 3S White silver	¾ yard	Blocks and inner border
Fabric E	L7265 119G Vintage gold	L7265 194S Robins egg silver	⅝ yard	Blocks
Fabric F	L7267 119G Vintage gold	L7267 194S Robins egg silver	⅝ yard	Blocks
Fabric G	L7266 4G Black gold	L7266 128S Midnight silver	1 ⅛ yards	Outer border
Fabric H	G8555 79G Seafoam gold	L7268 194S Robins egg silver	¼ yard	Middle border
Backing: 5 ¼ yards of any Antonella fabric				

## Cutting

*All strips are cut across the width of the fabric.*

### From fabric A, fussy cut:

- (15) 10 ½" squares; centering a motif in the middle of each square

### From fabric B, cut:

- (20) 1 ½" x 42" strips; cut into (30) 1 ½" x 12 ½" rectangles and (30) 1 ½" x 10 ½" rectangles
- (2) 4 ½" x 42" strips; cut into (15) 4 ½" squares

### From fabric C, cut:

- (16) 2" x 42" strips
- (8) 2 ¼" x 42" binding strips

### From fabric D, cut:

- (8) 1 ½" x 42" strips
- (7) 1 ½" x 42" border strips. Piece the strips; cut (2) 1 ½" x 72 ½" strips and (2) 1 ½" x 62 ½" strips.

### From fabric E, cut:

- (4) 4 ½" x 42" strips; cut into (30) 4 ½" squares

### From fabric F, cut:

- (4) 4 ½" x 42" strips; cut into (30) 4 ½" squares

### From fabric G, cut:

- (8) 4 ½" x 42" border strips. Piece the strips; cut (2) 4 ½" x 75 ½" strips and (2) 4 ½" x 71 ½" strips.

### From fabric H, cut:

- (7) 1" x 42" border strips. Piece the strips; cut (2) 1" x 74 ½" strips and (2) 1" x 63 ½" strips.

# Block Assembly

1. Sew fabric B  $1\frac{1}{2}$ " x  $10\frac{1}{2}$ " rectangles to opposite sides of a fabric A square. Then sew fabric B  $1\frac{1}{2}$ " x  $12\frac{1}{2}$ " rectangles to the top and bottom of the square to complete block A. Make a total of 15 A blocks.



2. Sew fabric C 2"-wide strips to both long sides of a fabric D  $1\frac{1}{2}$ "-wide strip to make a strip set. Make a total of eight strip sets. Cut the strip sets into 60 segments,  $4\frac{1}{2}$ " wide.



3. Lay out four segments from step 2, one fabric B square, two fabric E squares, and two fabric F squares in three rows as shown. Join the pieces into rows and then join the rows to make block B. Make a total of 15 B blocks.



# Quilt-Top Assembly

4. Referring the photo for placement guidance, lay out the blocks in six rows of five blocks each, alternating the A and B blocks as shown in the diagram below. Join the blocks into rows and then join the rows to complete the quilt-top center.

5. Sew the fabric D  $72\frac{1}{2}$ "-long strips to opposite sides of the quilt-top center. Then sew the fabric D  $62\frac{1}{2}$ "-long strips to the top and bottom of the quilt top to complete the inner border.

6. Sew the fabric H  $74\frac{1}{2}$ "-long strips to opposite sides of the quilt-top center. Then sew the fabric H  $63\frac{1}{2}$ "-long strips to the top and bottom of the quilt top to complete the middle-border.

7. Sew the fabric G  $75\frac{1}{2}$ "-long strips to opposite sides of the quilt-top center. Then sew the fabric G  $71\frac{1}{2}$ "-long strips to the top and bottom of the quilt top to complete the outer-border.

8. Layer the quilt top with batting and backing; baste. Quilt as desired. Using the fabric C  $2\frac{1}{4}$ "-wide binding strips, bind the edges to finish.

