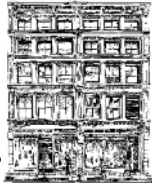


**TIMELESS
TREASURES**

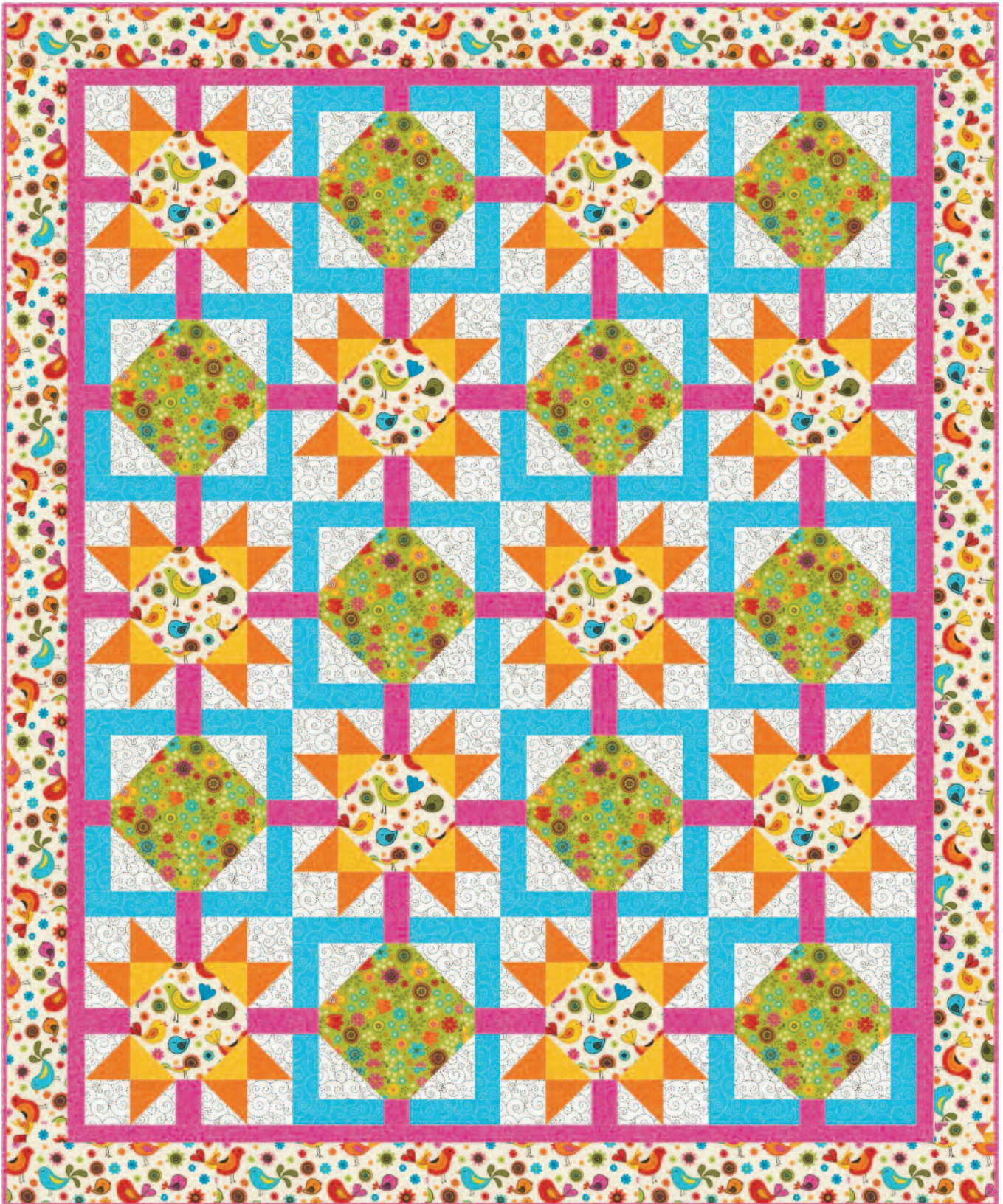


BROOME STREET PATTERNS

Folk Song

Star Weave Quilt

Designed by Nancy Mahoney



Finished quilt: 57 $\frac{1}{2}$ " x 69 $\frac{1}{2}$ " • Finished block: 12"

Fabric Requirements

1½ yards Stitch-C2745 White

1¾ yards Folk-C2743 Cream

1⅛ yards Stitch-C2745 Pink (includes binding)

1 yard Folk-C2744 Lime

¾ yard Stitch-C2745 Turquoise

½ yard Stitch-C2745 Orange

½ yard Stitch-C2745 Yellow

¾ yards Folk Song print of your choice (backing)

65" x 77" batting

Cutting

From Stitch-C2745 White:

• Cut four 3½" x width of fabric (WOF) strips. Sub-cut forty 3½" squares.

• Cut four 3⅛" x WOF strips. Sub-cut forty 3⅛" squares.

• Cut five 4¼" x WOF strips. Sub-cut forty 4¼" squares.

From Folk-C2743 Cream:

• Cut two 7¼" x WOF strips. Sub-cut ten 7¼" squares.

• Cut seven 4" x WOF strips. Sew the strips together end to end with diagonal seams and cut two 4" x 62½" strips and two 4" x 57½" strips.

From Stitch-C2745 Pink:

• Cut two 3⅛" x WOF strips. Sub-cut forty 2" x 3⅛" rectangles.

• Cut two 2" x WOF strips. Sub-cut forty 2" squares.

• Cut six 1½" x WOF strips. Sew the strips together end to end with diagonal seams and cut two 1½" x 60½" strips and two 1½" x 50½" strips.

• Cut seven 2¼" x WOF strips for the binding.

From Folk-C2744 Lime:

• Cut three 9½" x WOF strips. Sub-cut ten 9½" squares.

From Stitch-C2745 Turquoise:

• Cut two 5¾" x WOF strips. Sub-cut forty 2" x 5¾" rectangles.

• Cut two 4¼" x WOF strips. Sub-cut forty 2" x 4¼" rectangles.

From Stitch-C2745 Orange:

• Cut four 3½" x WOF strips. Sub-cut forty 3½" squares.

From Stitch-C2745 Yellow:

• Cut four 3⅛" x WOF strips. Sub-cut forty 3⅛" squares.

Block Construction

Block A

1. Draw a diagonal line from corner to corner on the wrong side of each 3½" C2745 White square. Layer a marked square right sides together with a 3½" C2745 Orange square. Sew ¼" from each side of the marked line. Cut the squares apart on the marked line to make two half-square-triangle (HST) units. (figure 1) Make a total of eighty HST units.

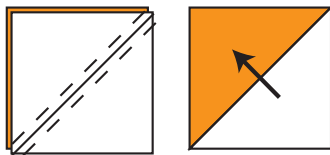


fig. 1

2. Draw a diagonal line from corner to corner on the wrong side of each 3⅛" C2745 Yellow square. Layer a marked square on one corner of a 7¼" C2743 Cream square, right sides together. Sew on the marked line and trim the excess corner fabric leaving a ¼" seam allowance. Press the seam allowances toward the resulting triangle. In the same way, sew

marked squares to the three remaining corners to make a center unit. (figure 2) Make a total of ten Center units.

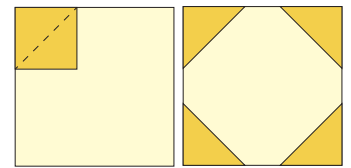


fig. 2-Block A Center Unit-Make 10.

3. Join two HST units and one 2" x 3⅛" C2745 Pink rectangle to make a side unit. (figure 3) Make a total of forty side units.

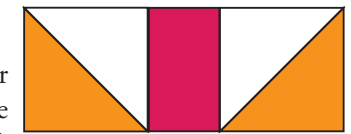


fig. 3-Block A Side Unit-Make 40.

4. Lay out four side units, four 3⅛" C2745 White squares, and one center unit as shown. (figure 4) Join the pieces into rows and then join the rows to make one Block A. Make a total of ten of Block A.

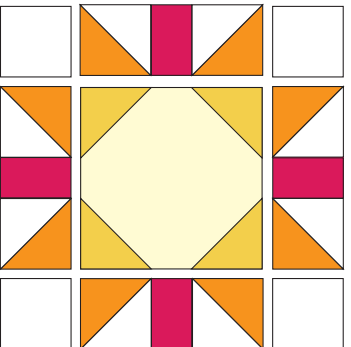


fig. 4-Block A-Make 10.

Block B

5. Draw a diagonal line from corner to corner on the wrong side of each 4¼" C2745 White square. Layer a marked square on one corner of a 9½" C2744 Lime square, right sides together. Sew on the marked line and trim the excess

corner fabric, leaving a ¼" seam allowance. Press the seam allowances toward the resulting triangle. In the same way, sew marked squares to the three remaining corners to make a center unit. (figure 5) Make a total of ten center units.

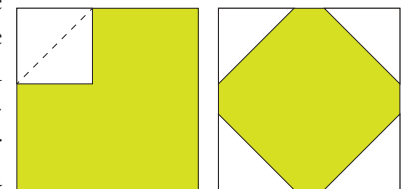


fig. 5-Block B Center Unit -Make 10.

6. Join two 2" x 4¼" C2745 Turquoise rectangles and one 2" C2745 Pink square as shown in figure 6 to make a side unit. Make twenty side units.



fig. 6-Block B Side Unit -Make 20.

7. Join two 2" x 5¾" C2745 Turquoise rectangles and one 2" C2745 Pink square as shown in figure 7 to make a top unit. Make ten top units. In the same way, make ten bottom units.



fig. 7-Block B Top/Bottom Unit-Make 20.

8. Lay out two side units, one top unit, one bottom unit, and one center unit as shown in figure 8. Join the units into rows and then join the rows to make one Block B. Make a total of ten of Block B.

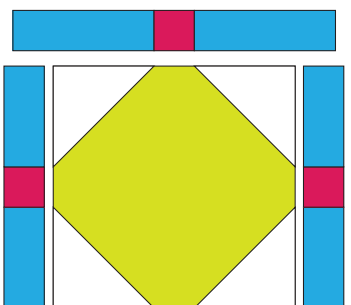


fig. 8-Block B-Make 10.

Quilt Top Assembly

9. Lay out the A and B Blocks in five rows of four blocks each, alternating them as shown in the Quilt Assembly Diagram.

10. Join the blocks into rows; then join the rows, matching adjacent seams.

11. Sew one 1½" x 60½" C2745 Pink strip to each side of the quilt top center. Sew a 1½" x 50½" C2745 Pink strip to the top and another to the bottom of the quilt top.

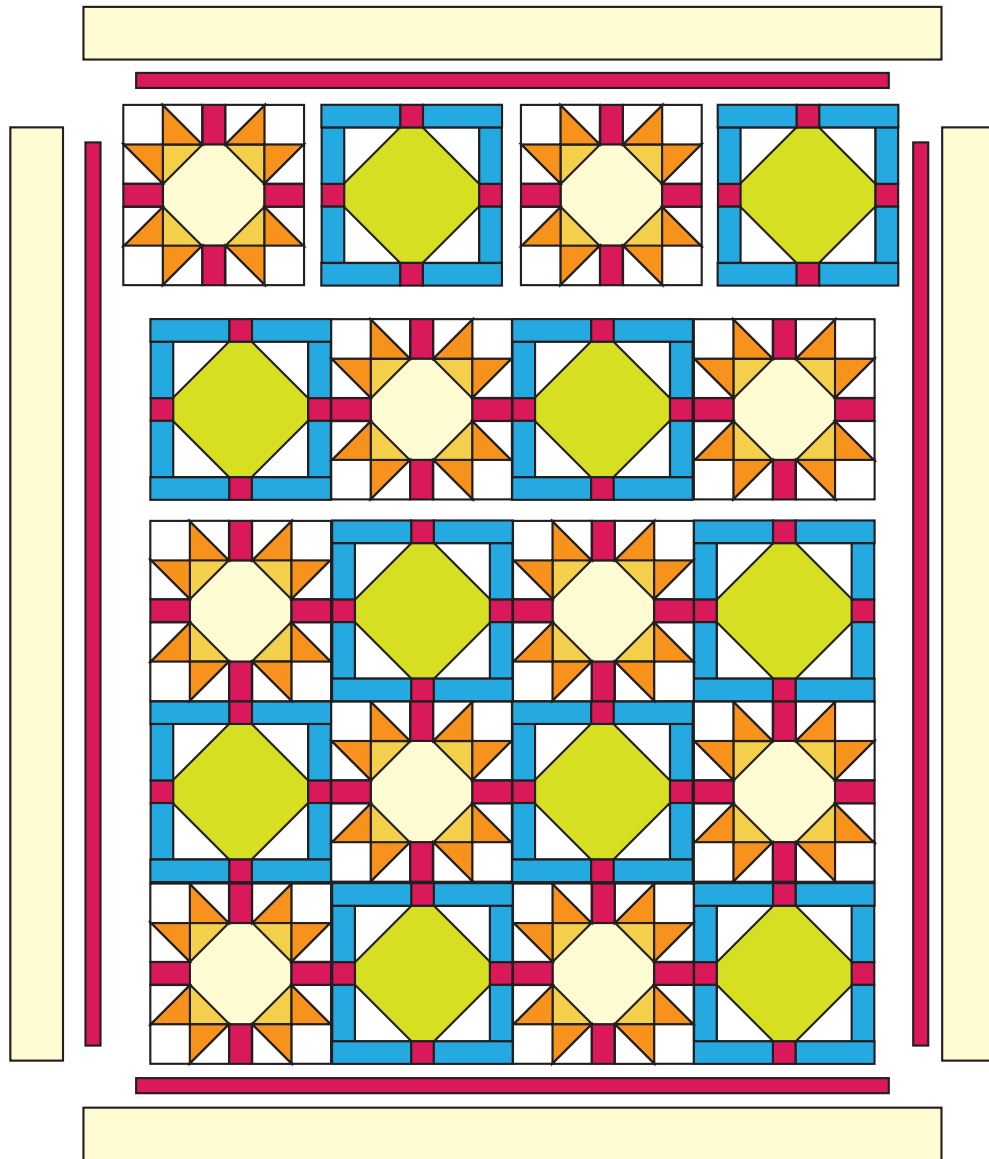
12. Sew a 4" x 62½" C2743 Cream strip to each side of the quilt top center. Sew a 4" x 57½" C2743 Cream strip to the top and another to the bottom of the quilt top.

Finishing

13. Layer the quilt top, batting and backing and quilt as desired.

14. Stitch the binding strips together end to end using diagonal seams. Fold and press the resulting long strip in half lengthwise with wrong sides together. Stitch to the quilt front, matching raw edges and mitering the corners.

15. Fold the binding to the quilt underside and hand-stitch the folded edge to the quilt back.



Quilt Assembly Diagram

©2014 Nancy Mahoney

www.nancymahoney.com

Permission is granted to shop owners and teachers to make copies for promotional or educational purposes only.

This pattern may not be reproduced for commercial purposes (i.e. may not be sold).

This pattern may not be reproduced for ANY PURPOSE after May 1, 2015.