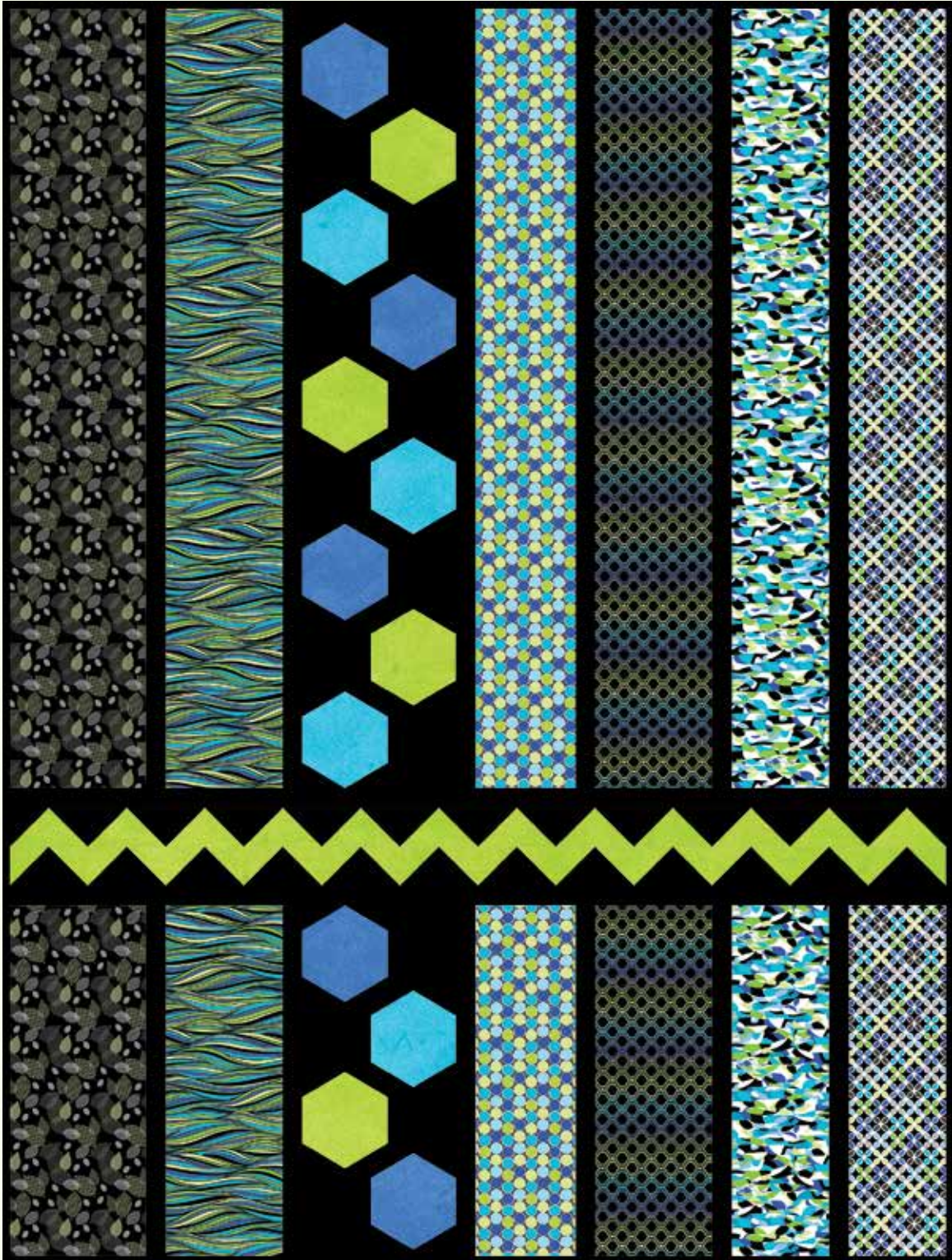


MODERNE



MODERNE

Modern Vibe quilt by Nancy Mahoney
featuring the *Moderne* collection by P&B Textiles
Quilt Size: 48" x 64"

YARDAGE

Fabric A	MODE 821 B	1/2 yard
Fabric B	MODE 822 B	1/2 yard
Fabric C	MODE 823 B	1/2 yard
Fabric D	MODE 824 G	1/2 yard
Fabric E	MODE 825 B	1/2 yard
Fabric F	MODE 826 B	1/2 yard
Fabric G	SUEB 300 LB*	1/4 yard
Fabric H	SUEB 300 LG*	1/2 yard
Fabric I	SUEB 300 T*	1/4 yard
Fabric J	CSNE K** (solid black)	1 5/8 yards
Backing	Any MODE fabric	3 yards
Fusible web		1/2 yard

* from the *Suede Brights* collection

** from the *Color Spectrum* collection

CUTTING

From fabric A (MODE 821 B), cut:

- (1) 6 1/2" x 40 1/2" strip
- (1) 6 1/2" x 18 3/4" strip

From fabric B (MODE 822 B), cut:

- (1) 5 1/2" x 40 1/2" strip
- (1) 5 1/2" x 18 3/4" strip

From fabric C (MODE 823 B), cut:

- (1) 5 1/2" x 40 1/2" strip
- (1) 5 1/2" x 18 3/4" strip

From fabric D (MODE 824 G), cut:

- (1) 7 1/2" x 40 1/2" strip
- (1) 7 1/2" x 18 3/4" strip

From fabric E (MODE 825 B), cut:

- (1) 5 1/2" x 40 1/2" strip
- (1) 5 1/2" x 18 3/4" strip

From fabric F (MODE 826 B), cut:

- (1) 6 1/2" x 40 1/2" strip
- (1) 6 1/2" x 18 3/4" strip

From fabric G (SUEB 300 LB), cut:

- (6) hexagons prepared with fusible web

From fabric H (SUEB 300 LG), cut:

- (1) 5 1/4" x 42" strip; cut into (6) 5 1/4" squares.
Cut the squares into quarters diagonally to make 24 quarter-square triangles (1 is extra).
- (1) 2 7/8" square; cut in half diagonally to yield (2) half-square triangles
- (6) hexagons prepared with fusible web

From fabric I (SUEB 300 T), cut:

- (6) hexagons prepared with fusible web

From fabric J (CSNE K), cut:

- (1) 5 1/4" x 42" strip; cut into (6) 5 1/4" squares.
Cut the squares into quarters diagonally to make 24 quarter-square triangles (1 is extra).
- (1) 10 1/2" x 40 1/2" strip
- (1) 10 1/2" x 18 3/4" strip
- (3) 1 1/2" x 42" strips. Piece the strips and cut (2) 1 1/2" x 48 1/2" strips.
- (4) 1 1/2" x 40 1/2" strips
- (4) 1 1/2" x 18 3/4" strips
- (6) 2 1/4" x 42" binding strips
- (1) 2 7/8" square; cut in half diagonally to yield (2) half-square triangles

MAKING THE QUILT TOP

1. Join 11 fabric J quarter-square triangles and 12 fabric H quarter-square triangles to make a pieced strip. Add a fabric J half-square triangle to each end of the strip as shown in the diagram following step 3.

2. Join 11 fabric H quarter-square triangles and 12 fabric J quarter-square triangles as shown below to make a long pieced strip. Add a fabric H half-square triangle to each end of the strip.

3. Join the strips from steps 1 and 2 to make a zigzag row. Sew fabric J 48 1/2"-long strips to both long sides of the zigzag row.



4. Following the manufacturer's instructions, trace 18 hexagons onto the paper side of the fusible web. Roughly cut out each shape about $\frac{1}{8}$ " outside the drawn lines. Fuse six hexagons onto the wrong side of fabric G. Fuse six hexagons onto the wrong side of fabric H and six hexagons onto the wrong side of fabric I. Cut out each hexagon on the traced line.

5. Remove the paper. Referring to the quilt photo for placement guidance, fuse nine hexagons onto the fabric J $10\frac{1}{2}$ " x $40\frac{1}{2}$ " strip, placing them about 1" from each long edge and at least $\frac{1}{4}$ " from each short end. Use a matching color thread and the machine stitch of your choice to finish the raw edges.

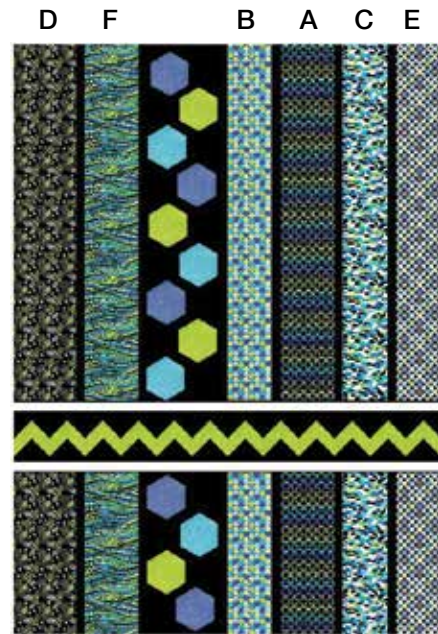
6. Repeat step 5 to appliqué four hexagons onto the fabric J $10\frac{1}{2}$ " x $18\frac{3}{4}$ " strip.

7. Referring to the quilt photo and layout diagram for placement guidance, join the fabric J $11\frac{1}{2}$ " x $40\frac{1}{2}$ " strips, the appliqué strip from step 5, and the $40\frac{1}{2}$ "-long strips of fabrics A, B, C, D, E, and F to make the top section.

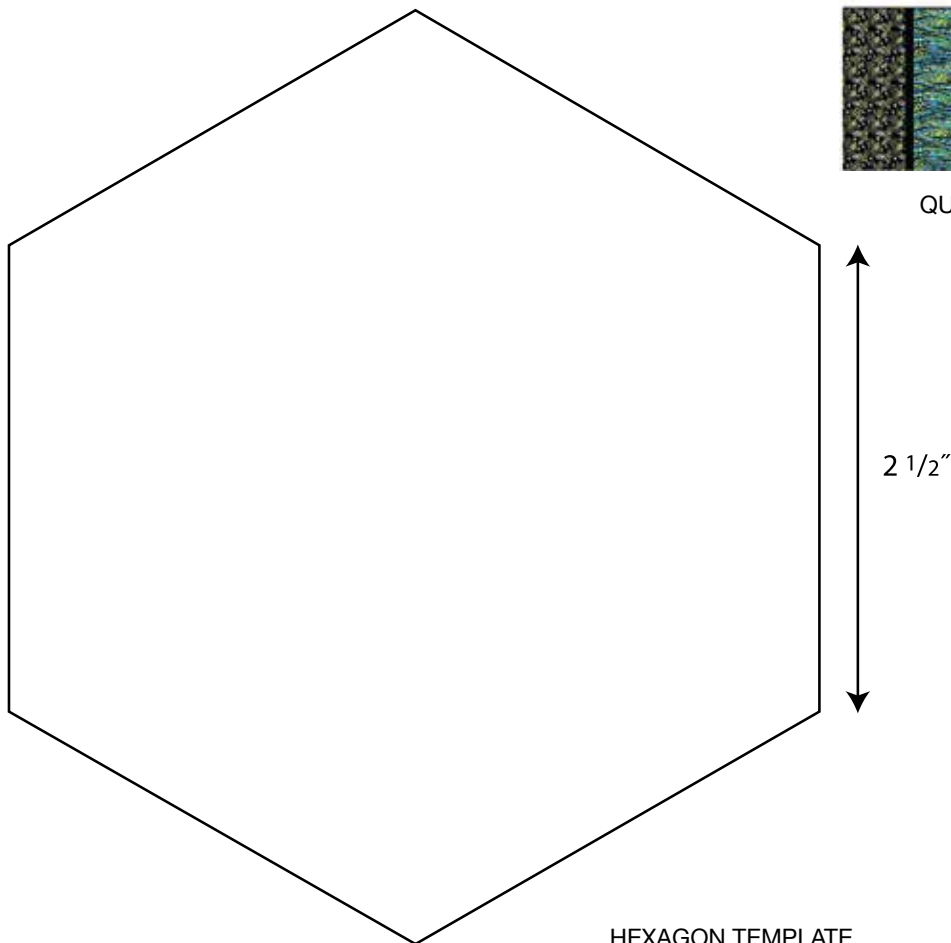
8. Join the fabric J $11\frac{1}{2}$ " x $18\frac{3}{4}$ " strips, appliqué strip from step 6, and the $18\frac{3}{4}$ "-long strips of fabrics A, B, C, D, E, and F to make the bottom section.

9. Join the top section, zigzag row, and bottom section to complete the quilt top.

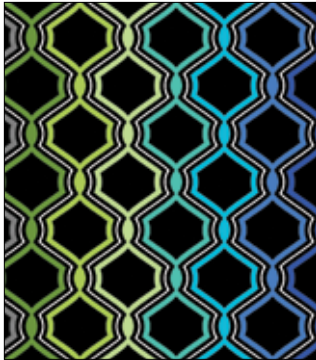
10. Layer the quilt top with batting and backing; baste. Quilt as desired. Using the fabric J strips, bind the edges to finish.



QUIT LAYOUT DIAGRAM



HEXAGON TEMPLATE



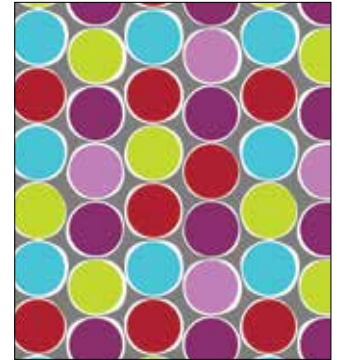
MODE 821 B



MODE 821 V



MODE 822 B



MODE 822 V



MODE 823 B



MODE 823 P



MODE 824 G



MODE 824 V



MODE 825 B



MODE 825 MU



MODE 826 B



MODE 826 V



MODE 827 G



MODE 827 V



P&B Textiles ♦ www.pbtex.com ♦ 800-351-9087
45-47 Washington St., Pawtucket, RI 02860 ♦ 237 W. 35th St., 11th floor, New York, NY 10001

△ 100% cotton ♦ Cold wash & dry ♦ 43" / 44" ♦ Colors may vary due to printing process
All fabrics shown at 50% scale except where indicated otherwise.