

Nomad



Nomad

Journeys quilt by Nancy Mahoney
featuring the *Nomad* collection by Jen Fox for P&B Textiles
Quilt Size: 62" square

Yardage

Fabric A	NOMA 261 S	1/2 yard
Fabric B	NOMA 262 S	1/2 yard
Fabric C	NOMA 263 S	1/2 yard
Fabric D	NOMA 264 S	1/2 yard
Fabric E	NOMA 265 S	1/2 yard
Fabric F	NOMA 266 AU	1/2 yard
Fabric G	NOMA 266 NE	1/2 yard
Fabric H	NOMA 267 AU	1 3/4 yards
Fabric I	NOMA 267 S	7/8 yard
Fabric J	CSNE W*	1 yard
Backing	any NOMA fabric	4 yards

* from the *Color Spectrum* collection



Cutting

From Fabric A (NOMA 261 S), cut:

- (2) 5 3/8" x 42" strips;
crosscut into (5) 5 3/8" x 12 1/2" rectangles

From Fabric B (NOMA 262 S), cut:

- (2) 5 3/8" x 42" strips;
crosscut into (5) 5 3/8" x 12 1/2" rectangles

From Fabric C (NOMA 263 S), cut:

- (1) 12 1/2" x 42" strip;
crosscut into (4) 5 3/8" x 12 1/2" rectangles

From Fabric D (NOMA 264 S), cut:

- (1) 12 1/2" x 42" strip;
crosscut into (5) 5 3/8" x 12 1/2" rectangles

From Fabric E (NOMA 265 S), cut:

- (2) 5 3/8" x 42" strips;
crosscut into (5) 5 3/8" x 12 1/2" rectangles

From Fabric F (NOMA 266 AU), cut:

- (2) 5 3/8" x 42" strips;
crosscut into (4) 5 3/8" x 12 1/2" rectangles

From Fabric G (NOMA 266 NE), cut:

- (2) 5 3/8" x 42" strips;
crosscut into (4) 5 3/8" x 12 1/2" rectangles

From Fabric H (NOMA 267 AU), cut:

- (2) 6 7/8" x 42" strips;
crosscut into (64) 1 1/4" x 6 7/8" strips
- (2) 12 1/2" x 42" strip;
crosscut into (64) 1 1/4" x 12 1/2" strips
- (7) 2 1/4" x 42" binding strips

From Fabric I (NOMA 267 S), cut:

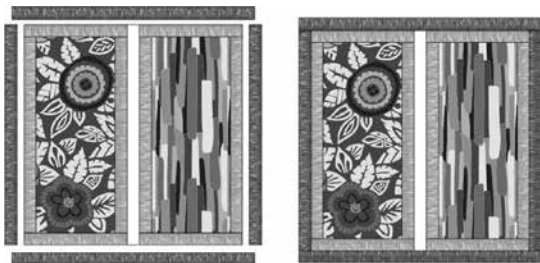
- (1) 15 1/2" x 42" strip; crosscut into
(16) 1 1/4" x 15 1/2" strips and (16) 1 1/4" x 14" strips
- (7) 1 1/2" x 42" border strips. Piece the strips and cut
(2) 1 1/2" x 62 1/2" strips and (2) 1 1/2" x 60 1/2" strips.

From Fabric J (CSNE W), cut:

- (1) 15 1/2" x 42" strip;
crosscut into (16) 1 1/4" x 15 1/2" strips
- (1) 14" x 42" strip;
crosscut into (32) 1 1/4" x 14" strips

Block Assembly

1. Sew fabric H $1\frac{1}{4}$ " x $12\frac{1}{2}$ " strips to opposite sides of a fabric A rectangle. Sew fabric H $1\frac{1}{4}$ " x $6\frac{7}{8}$ " strips to the top and bottom of the fabric A rectangle. Press all seam allowances toward the fabric H strips. Make a total of 5 units.
2. Repeat step 1 using the remaining fabric H strips and the fabric B–G rectangles to make a total of 27 units.
3. Referring to the photo for placement guidance, join two units and one fabric J $1\frac{1}{4}$ " x 14" strip as shown in the block assembly diagram to make a center unit. Press all seam allowances toward the fabric H strips. Make 16 units.
4. Sew fabric I $1\frac{1}{4}$ " x 14" strips to opposite sides of a center unit. Sew fabric I $1\frac{1}{4}$ " x $15\frac{1}{2}$ " strips to the top and bottom of the unit to complete the block. Press all seam allowances toward the fabric I strips. Make a total of 8 blocks.



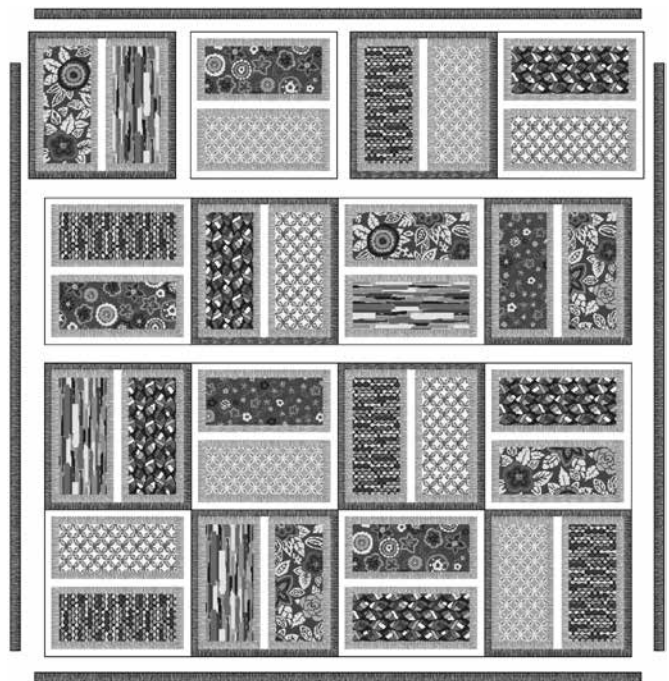
BLOCK ASSEMBLY DIAGRAM

5. Repeat step 4 using the fabric J $1\frac{1}{4}$ " x 14" strips and $1\frac{1}{4}$ " x $15\frac{1}{2}$ " strips to make 8 blocks.



Quilt Assembly

6. Lay out the blocks in four rows of four blocks each, rotating the blocks from step 5 as shown in the quilt assembly diagram. Join the blocks into rows. Press the seam allowances in the opposite direction from row to row. Join the rows and press.
7. Sew fabric I $60\frac{1}{2}$ "-long border strips to opposite sides of the quilt top center. Then sew fabric I $62\frac{1}{2}$ "-long border strips to the top and bottom of the quilt top to complete the border.
8. Layer the quilt top with batting and backing; baste. Quilt as desired. Using the fabric H $2\frac{1}{4}$ "-wide binding strips, bind the edges to finish.



QUILT ASSEMBLY DIAGRAM

Nomad

Fabric Collection by **Jen Fox**



NOMA 261 S 27% scale



NOMA 261 Z 27% scale



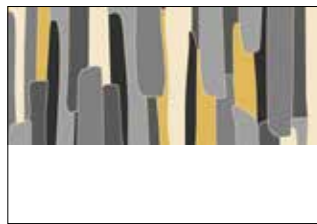
NOMA 262 S Shown selvage to selvage at 10% scale



NOMA 262 Z Same design showed at 50% scale



NOMA 263 MU



NOMA 263 S



NOMA 264 S



NOMA 264 Z



NOMA 265 MU



NOMA 265 S



NOMA 266 AU



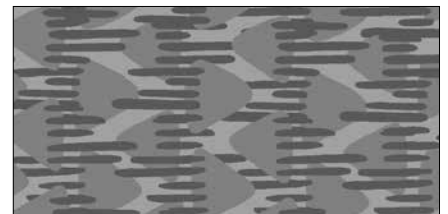
NOMA 266 NE



NOMA 267 AU



NOMA 267 O



NOMA 267 S



P&B Textiles ♦ www.pbtex.com ♦ 800-351-9087

45-47 Washington St., Pawtucket, RI 02860 ♦ 237 W. 35th St., 11th floor, New York, NY 10001

▲ 100% cotton ♦ Cold wash & dry ♦ 43" / 44" ♦ Colors may vary due to printing process

All fabrics shown at 50% scale except where indicated otherwise.