

Gramercy Park

Fabric Collection by Janet Orfini



FREE PATTERN
Ask for our fabrics
in your local
independent
quilt shop!

Gramercy Stars quilt by Nancy Mahoney

Quilt Size: 64 1/2" square

R & B
TEXTILES

pbtex.com

Gramercy Stars

Quilt designed by Nancy Mahoney using the *Gramercy Park* fabric collection
by Janet Orfini for P&B Textiles

Quilt Size: 64 1/2" square ♦ Finished Block: 16" square

Yardage

- 2 yards GPAR 623 E (large floral)
for outer border
- 1 1/3 yards GPAR 628 G (dark green tonal)
for blocks, sashing squares,
and binding
- 1 yard GPAR 628 E (cream tonal)
for blocks
- 7/8 yard GPAR 624 E (flower vine)
for blocks
- 5/8 yard GPAR 625 R (red petals)
for blocks
- 5/8 yard GPAR 628 R (red tonal)
for sashing
- 1/2 yard GPAR 628 M (light green tonal)
for blocks
- 1/2 yard GPAR 627 R (red floral toile)
for blocks
- 1/2 yard GPAR 627 G (green floral toile)
for blocks
- 4 yards any *Gramercy Park* fabric
for backing

Note: All fabric is cut across the width of fabric unless indicated otherwise.

Cutting

From the dark green tonal, cut:

- ♦ 9 strips, 2 1/2" x 42";
crosscut into 144 squares, 2 1/2" x 2 1/2"
- ♦ 7 binding strips, 2 1/4" x 42"
- ♦ 1 strip, 1 1/2" x 42";
crosscut into 16 squares, 1 1/2" x 1 1/2"

From the cream tonal, cut:

- ♦ 12 strips, 2 1/2" x 42"; crosscut into:
- ♦ 72 rectangles, 2 1/2" x 4 1/2"
- ♦ 36 squares, 2 1/2" x 2 1/2"

From the red floral toile, cut:

- ♦ 18 squares, 4 7/8" x 4 7/8"

From the light green tonal, cut:

- ♦ 18 squares, 4 7/8" x 4 7/8"

From the red petals, cut:

- ♦ 7 strips, 2 1/2" x 42";
crosscut into 108 squares, 2 1/2" x 2 1/2"

From the flower vine, cut:

- ♦ 6 strips, 4 1/2" x 42";
crosscut into 45 squares, 4 1/2" x 4 1/2"

From the green floral toile, cut:

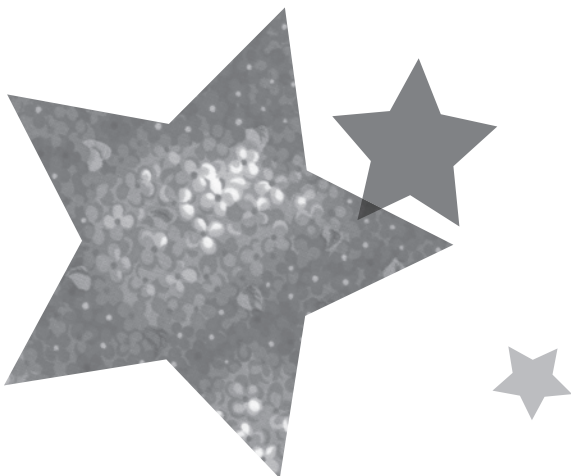
- ♦ 5 strips, 2 1/2" x 42";
crosscut into 36 rectangles, 2 1/2" x 4 1/2"

From the red tonal, cut:

- ♦ 1 strip, 16 1/2" x 42";
crosscut into 24 rectangles, 1 1/2" x 16 1/2"

From the lengthwise grain of the large floral, cut:

- ♦ 2 outer-border strips, 6 1/2" x 64 1/2"
- ♦ 2 outer-border strips, 6 1/2" x 52 1/2"



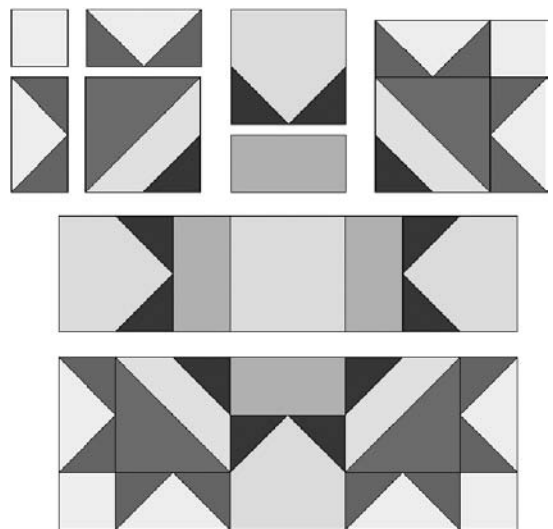
Construction

BLOCKS

1. Draw a diagonal line on the wrong side of each $2\frac{1}{2}$ " dark green square. Place a marked square on one end of each $2\frac{1}{2}$ " x $4\frac{1}{2}$ " cream rectangle, right sides together. Sew along the marked line. Trim the excess fabric leaving a $\frac{1}{4}$ " seam allowance. Press toward the triangle. Repeat to sew a marked square on the opposite end of each rectangle. Make 72 flying-geese units.
2. Draw a diagonal line on the wrong side of each $\frac{7}{8}$ " light green square. Match each marked square with a red-floral-toile square, right sides together. Sew $\frac{1}{4}$ " from both sides of the marked line. Cut on the marked line. Press the seams toward the red toile. Make 36 half-square triangles.
3. Draw a diagonal line on the wrong side of each $2\frac{1}{2}$ " red-petal square. Using the half-square triangles from step 2, place a marked square on top of the light green triangle, right sides together and raw edges aligned. Sew along the marked line. Trim the excess fabric, leaving a $\frac{1}{4}$ " seam allowance. Press the seams toward the red triangle. (You'll use the remaining marked red squares for step 5.)
4. Sew one unit from step 3, two flying-geese units, and one $2\frac{1}{2}$ " cream square together to make a corner unit. Refer to the photo and the diagram following step 7 as needed. Make 36 corner units.
5. Place a marked red square (from step 3) on one corner of a $4\frac{1}{2}$ " flower-vine square, right sides together and raw edges aligned. Sew along the marked line. Trim the excess fabric, leaving a $\frac{1}{4}$ " seam allowance. Press the seams toward the red triangle. Repeat to sew a marked square on an adjacent corner of the flower-vine square. Make 36 units.
6. Sew a unit from step 5 and a $2\frac{1}{2}$ " x $4\frac{1}{2}$ " green-floral-toile rectangle together to make a side unit; press. Refer to the photo and the block construction diagram as needed. Make 36 side units.
7. Sew four corner units, four side units, and one $4\frac{1}{2}$ " flower-vine square together as shown to make a block. Make 9 blocks.

Quilt Assembly

8. Arrange and sew together three blocks and four $1\frac{1}{2}$ " x $16\frac{1}{2}$ " red sashing strips, alternating them as shown in the photo to make a block row. Press the seams toward the red strips. Make three block rows.
9. Arrange and sew together three $1\frac{1}{2}$ " x $16\frac{1}{2}$ " red sashing strips and four $1\frac{1}{2}$ " dark green squares, alternating them as shown in the photo to make a sashing row. Press the seams toward the red strips. Make four sashing rows.
10. Sew the block rows and sashing rows together, alternating them as shown in the photo. Press the seams toward the sashing rows.
11. Sew a $52\frac{1}{2}$ " floral outer-border strip to each side of the quilt top. Press the seams toward the border strips. Sew a $64\frac{1}{2}$ " floral outer-border strip to the top and bottom of the quilt top; press.
12. Layer the quilt top with batting and backing. Quilt as desired. Bind the edges to finish. Add a label to the back of your quilt and enjoy!



BLOCK CONSTRUCTION