

# Scratch Texture

Fabric Collection by P. Carter Carpin



FREE PATTERN  
Ask for our fabrics  
in your local  
independent  
quilt shop!



*Scratchify* quilt by Nancy Mahoney

Size: 60" x 70"



[pbtex.com](http://pbtex.com)

# Scratchify

Quilt by Nancy Mahoney using the *Scratch Texture*  
from the *Love Lives Here* fabric collection by P. Carter Carpin for P&B Textiles

Size: 60" x 70"

## Yardage

LOVE 499 YG	1/2 yard
LOVE 499 LG	1/2 yard
LOVE 499 LB	1/2 yard
LOVE 499 BB	1/2 yard
LOVE 499 O	1/2 yard
LOVE 499 R	1/2 yard
LOVE 499 X	1/2 yard
LOVE 499 LZ	1/2 yard
LOVE 499 N	5/8 yard
LOVE 499 RV	3/4 yard
RAM7 725 W	2 1/8 yards

**BACKING:** 3 3/4 yards of any *LOVE* fabric

## Cutting

All strips are cut across the width of fabric (wof).

From **RAM7 725 W**, cut:

- (16) 1 1/4" x wof strips; cut into (50) 1 1/4" x 5 1/2" rectangles *and* (50) 1 1/4" x 6" rectangles
- (6) 1 1/4" x wof strips; cut into (72) 1 1/4" x 3" rectangles
- (34) 1 1/4" x wof strips

From **LOVE 499 BB**, cut:

- (3) 2 1/4" x wof strips; cut into (25) 2 1/4" x 3 1/4" rectangles
- (1) 3" x 33" border strip
- (1) 3" x 30 1/2" border strip

From **LOVE 499 LG**, cut:

- (3) 2 1/4" x wof strips; cut into (25) 2 1/4" x 3 1/4" rectangles
- (1) 3" x 33" border strip
- (1) 3" x 30 1/2" border strip

From **LOVE 499 LZ**, cut:

- (3) 2 1/4" x wof strips; cut into (25) 2 1/4" x 3 1/4" rectangles
- (1) 3" x 33" border strip
- (1) 3" x 30 1/2" border strip

From **LOVE 499 R**, cut:

- (3) 2 1/4" x wof strips; cut into (25) 2 1/4" x 3 1/4" rectangles
- (1) 3" x 33" border strip
- (1) 3" x 30 1/2" border strip

From **LOVE 499 LB**, cut:

- (6) 2" x wof strips; cut into (25) 2" x 4" rectangles *and* (25) 2" x 4 1/2" rectangles

From **LOVE 499 O**, cut:

- (6) 2" x wof strips; cut into (25) 2" x 4" rectangles *and* (25) 2" x 4 1/2" rectangles

From **LOVE 499 X**, cut:

- (6) 2" x wof strips; cut into (25) 2" x 4" rectangles *and* (25) 2" x 4 1/2" rectangles

From **LOVE 499 YG**, cut:

- (6) 2" x wof strips; cut into (25) 2" x 4" rectangles *and* (25) 2" x 4 1/2" rectangles

From **LOVE 499 N**, cut:

- (2) 1 1/2" x wof strips
- (7) 2 1/4" x wof binding strips

From **LOVE 499 RV**, cut:

- (15) 1 1/2" x wof strips

## Block Assembly

**1.** Lay out one 499 BB rectangle, one 499 LG rectangle, one 499 LZ rectangle, and one 499 R rectangle in a four patch arrangement as shown in the photo. Join the rectangles in pairs along their long edges. Then join the pairs to make a four-patch unit. The unit should measure 4" x 6". Repeat to make a total of 25 four-patch units.

**2.** Sew white (717 W) 1 1/4" x 6" rectangles to the long sides of each four-patch unit. Then sew white 1 1/4" x 5 1/2" rectangles to the top and bottom edges of each unit. The unit should measure 5 1/2" x 7 1/2". Make 25 units.

**3.** Join a 499 X 2" x 4" rectangle to the short end of each 499 LB 2" x 4" rectangle. Make 25 pieced rectangles. Sew a 499 YG 2" x 4" rectangle to the short end of each 499 O 2" x 4" rectangle to make 25 pieced rectangles.

**4.** Referring to the photo for placement guidance, sew the pieced rectangles from step 3 to the left and right sides of each unit from step 2.

**5.** Join a 499 LB 2" x 4 1/2" rectangle to the short end of each 499 O 2" x 4 1/2" rectangle. Make 25 pieced rectangles. Sew a 499 X 2" x 4 1/2" rectangle to the short end of each 499 YG 2" x 4 1/2" rectangle to make 25 pieced rectangles.

**6.** Again referring to the photo for placement guidance, sew the pieced rectangles from step 4 to the top and bottom edges of each unit from step 5 to complete the blocks. The block should measure 8 1/2" x 10 1/2". Make 25 blocks total.



## Sashing & Sashing Square Assembly

**7.** Sew a white 1 1/4"-wide strip to both long edges of a 499 N strip to make a strip set. Make two strips sets and crosscut them into (36) 1 1/2"-wide segments.

**8.** Sew white 1 1/4" x 3" rectangles to opposite sides of each segment from step 7 to make a sashing square. The sashing squares should measure 3" x 3".

**9.** Sew a white 1 1/4"-wide strip to both long edges of a 499 RV strip to make a strip set. Make 15 strips sets and crosscut them into (30) 10 1/2"-wide sashing strips and (30) 8 1/2"-wide sashing strips.

## Quilt Assembly

**10.** Lay out five blocks and six 10 1/2"-wide sashing strips, alternating them as shown in the photo. Join the pieces to make a block row. Make five block rows.

**11.** Lay out six sashing squares and five 8 1/2"-wide sashing strips, alternating them as shown in the photo. Join the pieces to make a sashing row. Make six sashing rows.

**12.** Join the block rows and sashing rows, beginning and ending with a sashing row. The quilt top should measure 55 1/2" x 65 1/2".

**13.** Join the 499 LZ 33"-long strip to the short end of the 499 BB 33"-long strip to make a pieced border strip. Join the 499 LG 33"-long strip to the short end of the 499 R 33"-long strips to make a pieced border strip. Sew the strips to the sides of the quilt top as shown in the photo.

**14.** Join the 499 LZ 30 1/2"-long strip to the short end of the 499 LG 30 1/2"-long strip to make a pieced border strip. Join the 499 BB 30 1/2"-long strip to the short end of the 499 R 30 1/2"-long strips to make a pieced border strip. Sew the strips to the top and bottom edges of the quilt top as shown in the photo.

**15.** Layer the quilt top with batting and backing; baste. Quilt as desired. Using the 499 N 2 1/4"-wide strips, bind the edges to finish.

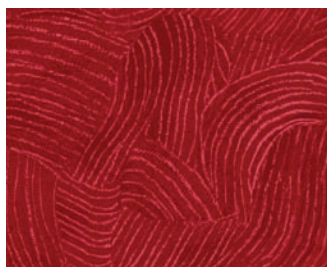
# Scratch Texture

Fabric Collection by P. Carter Carpin

\* Also shown with the *LOVE LIVES HERE* collection



LOVE 499 YG



LOVE 499 D



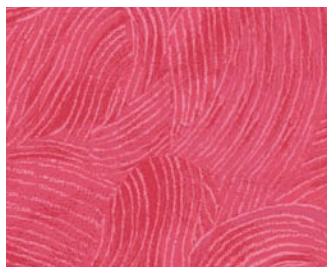
LOVE 499 R



LOVE 499 E



LOVE 499 LG



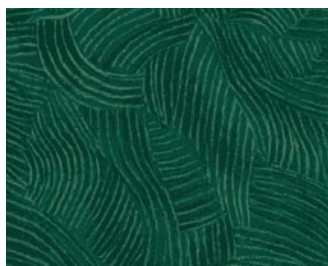
LOVE 499 P



LOVE 499 O



LOVE 499 Z\*



LOVE 499 BG



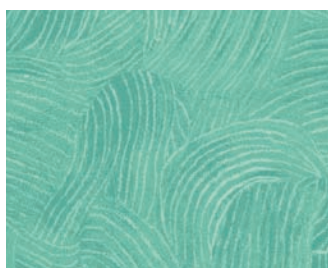
LOVE 499 RV\*



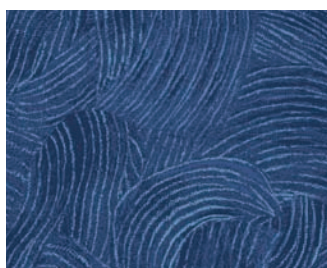
LOVE 499 Y



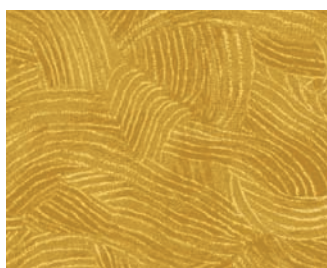
LOVE 499 LS



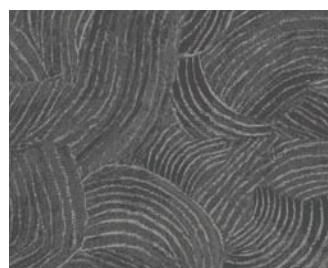
LOVE 499 LT



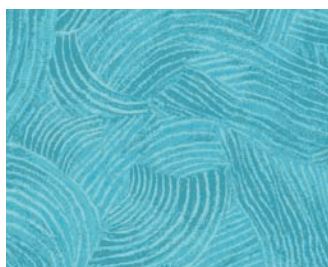
LOVE 499 BB



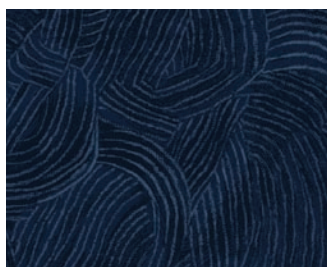
LOVE 499 X\*



LOVE 499 S



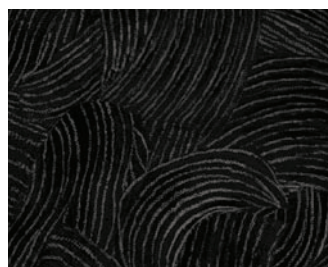
LOVE 499 LB



LOVE 499 N



LOVE 499 LZ



LOVE 499 K

**P&B Textiles** ♦ 1580 Gilbreth Road, Burlingame, CA 94010 ♦ 800-852-2327

For wholesale orders: 14683 Midway Road, Addison, TX 75001 ♦ 800-351-9087 ♦ [www.pbtex.com](http://www.pbtex.com)



100% cotton ♦ Cold wash & dry ♦ 43"/44" ♦ Colors may vary due to printing process ♦ 6/12

All fabrics shown at 60% scale.