

# VERACRUZ



# VERACRUZ

**Starburst** quilt by Nancy Mahoney  
featuring the *Veracruz* collection by P&B Textiles

Quilt Size: 61 1/2" square

## YARDAGE

Fabric A	<b>VERA 225 W</b>	2 yards
Fabric B	<b>VERA 226 W</b>	5/8 yard
Fabric C	<b>VERA 227 K</b>	7/8 yard
Fabric D	<b>VERA 227 W</b>	7/8 yard
Fabric E	<b>VERA 229 K</b>	7/8 yard
Fabric F	<b>VERA 230 K</b>	1/4 yard
Fabric G	<b>VERA 231 C</b>	1/4 yard
Fabric H	<b>VERA 231 G</b>	1/2 yard
Fabric I	<b>VERA 231 T</b>	1/3 yard
Fabric J	<b>VERA 231 Y</b>	1/4 yard
Fabric K	<b>CSNE W*</b> (solid white)	1/2 yard
Backing	<b>any VERA fabric</b>	4 yards

\* from the *Color Spectrum* collection

## CUTTING

All strips are cut across the width of the fabric unless otherwise noted.

### From fabric A (VERA 225 W), cut:

- (2) 4 1/2" x 62" lengthwise outer-border strips
- (2) 4 1/2" x 54" lengthwise outer-border strips

### From fabric B (VERA 226 W), cut:

- (5) 8 1/2" squares

### From fabric C (VERA 227 K), cut:

- (5) 4 7/8" x 42" strips; cut into (36) 4 7/8" squares. Cut the squares in half diagonally to yield 72 half-square triangles.

### From fabric D (VERA 227 W), cut:

- (3) 9 1/4" x 42" strips; cut into (9) 9 1/4" squares. Cut the squares twice diagonally to yield 36 quarter-square triangles.

### From fabric E (VERA 229 K), cut:

- (5) 2 1/2" x 42" inner-border strips. Piece the strips and cut (4) 2 1/2" x 48 1/2" strips.
- (7) 2 1/4" x 42" binding strips

### From fabric F (VERA 230 K), cut:

- (4) 4 1/2" squares

### From fabric G (VERA 231 C), cut:

- (2) 2 1/2" x 42" strips; cut into (32) 2 1/2" squares

### From fabric H (VERA 231 G), cut:

- (6) 1 1/4" x 42" middle-border strips. Piece the strips; cut (2) 1 1/4" x 54" strips and (2) 1 1/4" x 52 1/2" strips.
- (3) 2 1/2" x 42" strips; cut into (48) 2 1/2" squares

### From fabric I (VERA 231 T), cut:

- (3) 2 7/8" x 42" strips; cut into (36) 2 7/8" squares

### From fabric J (VERA 231 Y), cut:

- (3) 2 1/2" x 42" strips; cut into (44) 2 1/2" squares

### From fabric K (CSNE W), cut:

- (1) 4 1/2" x 42" strip; cut into (16) 2 1/2" x 4 1/2" rectangles
- (3) 2 7/8" x 42" strips; cut into (36) 2 7/8" squares

## MAKING BLOCK A

1. Sew fabric C half-square triangles to both short sides of a fabric D quarter-square triangle to make a flying-geese unit. The unit should measure 4 1/2" x 8 1/2". Make a total of 36 units. Set aside 16 of the units for block B.



2. Layer one fabric K 2 7/8" square right sides together with a fabric I square. Draw a diagonal line on the wrong side of the top square. Sew 1/4" on each side of the drawn line. Cut the squares apart on the line to make two half-square-triangle units, measuring 2 1/2" square. Repeat to make a total of 72 half-square-triangle units. Set aside 32 units for block B.

3. Lay out two fabric J squares and two half-square-triangle units in a four-patch arrangement as shown. Join the pieces into rows and then join the rows to make a corner unit. Make a total of 20 units.



4. Lay out four corner units from step 3, four flying-geese units from step 1, and one fabric B square in three rows as shown. Join the pieces into rows and then join the rows to complete one A block. Make a total of five blocks.



## MAKING BLOCK B

**5.** Draw a diagonal line on the wrong side of each fabric G square. Place a marked square on one end of a fabric K rectangle. Sew on the drawn line and trim the excess corner fabric leaving a  $\frac{1}{4}$ " seam allowance. Press the seam allowances toward the resulting triangle. Place a marked square on the other end of the rectangle as shown. Sew on the marked line, trim, and press. Make a total of 16 flying-geese units.



**6.** Lay out four flying-geese units from step 5, four fabric H squares, and one fabric F square in three rows as shown. Join the pieces into rows and then join the rows to make a center star unit. Make a total of four units.



**7.** Repeat step 3, using two fabric H squares and two half-square-triangle units from step 2 to make 16 corner units.

**8.** Lay out four corner units from step 7, four flying-geese units from step 1, and one center star unit from step 6 in three rows as shown. Join the pieces into rows and then join the rows to complete one B block. Make a total of four blocks.



## QUILT-TOP ASSEMBLY

*Refer to the quilt photo for placement guidance as needed.*

**9.** Lay out the blocks in three rows of three blocks each, alternating the A and B blocks as shown in the quilt layout diagram. Join the blocks into rows and then join the rows.

**10.** Sew fabric E  $2\frac{1}{2}$ "-wide strips to opposite sides of the quilt center. Sew a fabric J square to both ends of the two remaining fabric E  $2\frac{1}{2}$ "-wide strips. Sew these strips to the top and bottom of the quilt top.

**11.** Sew fabric H  $52\frac{1}{2}$ "-long border strips to opposite sides of the quilt top center. Then sew fabric H  $54$ "-long border strips to the top and bottom of the quilt top to complete the middle border.

**12.** Sew fabric A  $54$ "-long border strips to opposite sides of the quilt top center. Then sew fabric A  $62$ "-long border strips to the top and bottom of the quilt top to complete the outer border.

**13.** Layer the quilt top with batting and backing; baste. Quilt as desired. Using the fabric E  $2\frac{1}{4}$ "-wide binding strips, bind the edges to finish.



Quilt Layout Diagram



VERA 225 K



VERA 225 W



VERA 226 K



VERA 226 W



VERA 227 K



VERA 227 W



VERA 228 K



VERA 228 C



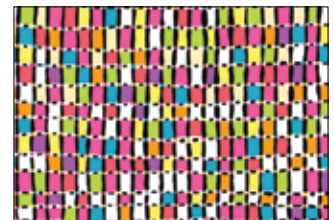
VERA 229 K



VERA 229 W



VERA 230 K



VERA 230 W



VERA 231 C



VERA 231 G



VERA 231 T



VERA 231 Y



**P&B Textiles** ♦ [www.pbtex.com](http://www.pbtex.com) ♦ 800-351-9087

45-47 Washington St., Pawtucket, RI 02860 ♦ 237 W. 35th St., 11th floor, New York, NY 10001

▲ 100% cotton ♦ Cold wash & dry ♦ 43" / 44" ♦ Colors may vary due to printing process

All fabrics shown at 25% scale except where indicated otherwise.