

Village Green

Fabric Collection by **Carolyn Gavin** for the Lilla Rogers Studio



Town Square

Town Square quilt by Nancy Mahoney
using the *Village Green* fabric collection by Carolyn Gavin
for the Lilla Rogers Studio & P&B Textiles

Size: 49" x 65"

Yardage

Fabric A	VGRE 571 MU	3/4 yard
Fabric B	VGRE 572 B	1 7/8 yards
Fabric C	VGRE 573 B	1/4 yard
Fabric D	VGRE 574 B	1/2 yard
Fabric E	VGRE 575 B	5/8 yard
Fabric F	VGRE 575 P	1/4 yard
Fabric G	VGRE 577 B	3/8 yard
Fabric H	VGRE 577 R	3/8 yard
Fabric I	CWEA 200 R*	5/8 yard
Fabric J	CWEA 200 X*	1/4 yard
Fabric K	CSNE W (white solid)	1 3/8 yard
Backing	any VGRE fabric	3 1/4 yards

* Color Weave collection

Cutting

From fabric A, cut:

- (2) 10" x 42" strips; cut into (8) 6" x 10" rectangles

From fabric B, cut:

- (2) 4" x 58 1/2" **lengthwise** outer-border strips
- (2) 4" x 24 3/4" **crosswise** border strips. Piece the strips to make (2) 4" x 49 1/2" outer borders.
- (2) 7 1/2" x 30" **crosswise** strip; cut into (8) 3" x 7 1/2" rectangles **and** (8) 2 3/4" x 7 1/2" rectangles

From fabric C, cut:

- (1) 4" x 42" strip; cut into (8) 4" squares

From fabric D, cut:

- (6) 2 1/4" x 42" binding strips

From fabric E, cut:

- (1) 11 1/2" x 42" strip; cut into (16) 2" x 11 1/2" rectangles
- (1) 7 1/2" x 42" strip; cut into (16) 2" x 7 1/2" rectangles

From fabric F, cut:

- (1) 4" x 42" strip; cut into (8) 4" squares

From fabric G, cut:

- (4) 2 1/4" x 42" strips; cut into (64) 2 1/4" squares

From fabric H, cut:

- (4) 2 1/4" x 42" strips; cut into (64) 2 1/4" squares

From fabric I, cut:

- (1) 10" x 42" strip; cut into (16) 1 1/4" x 10" rectangles
- (1) 7 1/2" x 42" strip; cut into (16) 1 1/4" x 7 1/2" rectangles

From fabric J, cut:

- (2) 2" x 42" strips, cut into (32) 2" squares

From fabric K, cut:

- (4) 4" x 42" strips; cut into (64) 2 1/4" x 4" rectangles
- (4) 2 1/4" x 42" strips; cut into (64) 2 1/4" squares
- (1) 7 1/4" x 42" strips; cut into (8) 1 1/4" x 7 1/2" rectangles **and** (8) 1" x 7 1/2" rectangles
- (6) 1 1/2" x 42" inner border strips

Making Block A

1. Sew fabric I 1 1/4" x 10" rectangles to opposite sides of a fabric A rectangle. Then sew fabric I 1 1/4" x 7 1/2" rectangles to the top and bottom of the rectangle. Repeat to make 8 units.

2. Sew fabric E 2" x 11 1/2" rectangles to opposite sides of each unit from step 1. Sew fabric J squares to the ends of each fabric E 2" x 7 1/2" rectangle. Sew pieced rectangles to the top and bottom of each unit to complete eight A blocks. The blocks should measure 10 1/2" x 14 1/2".



Making Block B

3. Draw a diagonal line on the wrong side of each fabric H square. Place a marked square on one end of a fabric K $2\frac{1}{4}'' \times 4''$ rectangle. Sew on the drawn line and trim the excess corner fabric leaving a $\frac{1}{4}''$ seam allowance. Press the seam allowances toward the resulting triangle. Place a marked square on the other end of the rectangle as shown. Sew on the marked line, trim, and press. Make a total of 32 red flying-geese units.

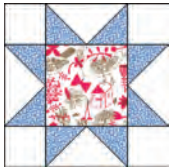


4. Lay out four red flying-geese units, four fabric K squares, and one fabric C square as shown. Join the pieces into rows and then join the rows to make a star block. The block should measure $7\frac{1}{2}''$ square. Make a total of eight blocks.



5. Repeat step 3, using the fabric G squares and remaining fabric K $2\frac{1}{4}'' \times 4''$ rectangles to make 32 blue flying-geese units.

6. Lay out four blue flying-geese units, four fabric K squares, and one fabric F square as shown. Join the pieces into rows and then join the rows to make a star block. The block should measure $7\frac{1}{2}''$ square. Make a total of eight blocks.



7. Join one fabric K $1\frac{1}{4}'' \times 7\frac{1}{2}''$ rectangle, one star block from step 4, and one fabric B $2\frac{3}{4}'' \times 7\frac{1}{2}''$ rectangle as shown to make the top row of Block B. Make a total of eight rows.



8. Join one fabric B $3'' \times 7\frac{1}{2}''$ rectangle, one star block from step 6, and one fabric K $1'' \times 7\frac{1}{2}''$ rectangle as shown to make the bottom row of Block B. Make a total of eight rows.



9. Join each top row to a bottom row to complete eight B blocks. The blocks should measure $10\frac{1}{2}'' \times 14\frac{1}{2}''$.



Assembling the Quilt Top

10. Layout the A and B blocks in four rows of four blocks each, alternating them as shown in the photo. Join the blocks into rows and then join the rows. The quilt top should measure $40\frac{1}{2}'' \times 56\frac{1}{2}''$.

11. Join the fabric K $1\frac{1}{2}''$ -wide strips together end to end. From the pieced strip, cut two $56\frac{1}{2}''$ -long strips and sew them to opposite sides of the quilt top. From the remaining pieced strip, cut two $42\frac{1}{2}''$ -long strips and sew them to the top and bottom of the quilt top to complete the inner border.

12. Making sure the trees are oriented as shown in the photo, sew the fabric B $58\frac{1}{2}''$ -long strips to opposite sides of the quilt top. Then sew the fabric B $49\frac{1}{2}''$ -long strips to the top and bottom of the quilt top to complete the outer border.

13. Layer the quilt top with batting and backing; baste. Quilt as desired. Using the fabric D strips, bind the edges to finish.

Village Green

Fabric Collection by **Carolyn Gavin**
for the Lilla Rogers Studio



VGRE 571 MU



VGRE 572 B



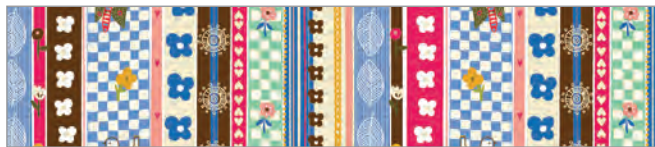
VGRE 572 Z



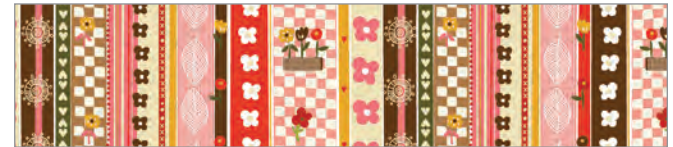
VGRE 573 B



VGRE 573 Y



VGRE 574 B



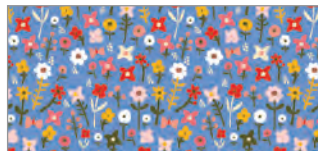
VGRE 574 P



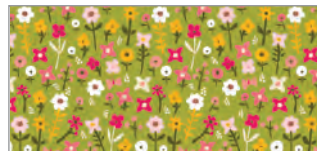
VGRE 575 B



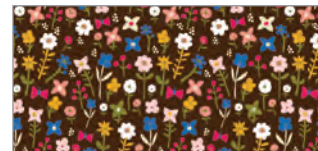
VGRE 575 P



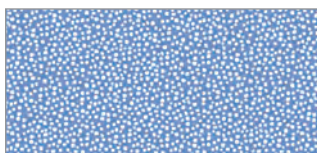
VGRE 576 B



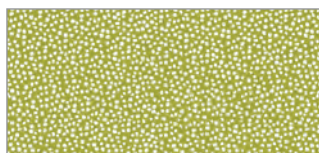
VGRE 576 G



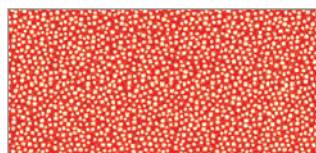
VGRE 576 Z



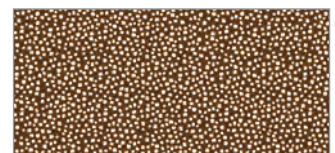
VGRE 577 B



VGRE 577 G



VGRE 577 R



VGRE 577 Z



P&B Textiles ♦ www.pbtex.com ♦ 800-351-9087
45-47 Washington St, Pawtucket, RI 02860 ♦ 237 W. 35th St, 11th floor, New York, NY 10001

△ 100% cotton ♦ Cold wash & dry ♦ 43"/44" ♦ Colors may vary due to printing process
All fabrics shown at 50% scale except where indicated otherwise.